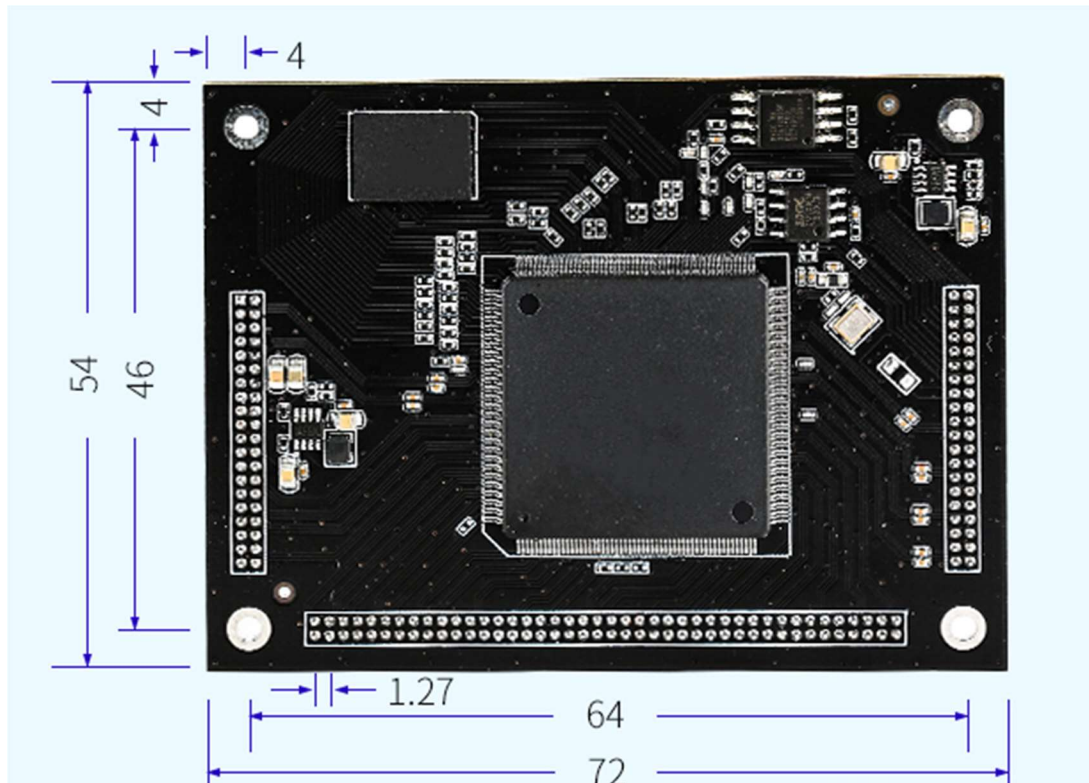


IG80: 8-port Gigabit managed switch module, low power consumption, L2 management, Support PSE

IG80 is a gigabit managed Ethernet switch module that supports multi-service access. All the signal pins are connected with the baseplate through double row pins (dip-164 row pins with a spacing of 1.27mm) and four positioning holes with a aperture of 2.2mm. The module uses 500Mhz MIPS32 processor and supports a rich layer 2 management protocol. IG80 module based on mature technology and open web standards design, it uses industrial chip that adapt to high and low temperature, strong electromagnetic interference resistance, salt fog resistant, embedded design can maximum earthquake stabilization, can satisfy the demands of industrial field severe working environment, to provide efficient, reliable and fast solution for industrial internet of thing.

- Internet protocol: IEEE802.3, IEEE802.3u, IEEE802.3ab, IEEE802.3X, IEEE802.3Z, IEEE802.1Q, IEEE802.1p, IEEE802.3ad, IEEE802.1D, IEEE802.1X
- module size: 72mm(H)x54mm(W)x9.5mm(D), package :DIP
- support up to 8 gigabit electrical interfaces and 2 gigabit optical interfaces
- the cache is up to 4Mbit, which can satisfy the smooth transmission of 4K video
- support ERPS ring protocol
- support port bandwidth limitation, port traffic control, broadcast storm suppression
- support IEEE 802.1q VLAN and port VLAN Settings, support QinQ
- support the STP/RSTP/MSTP protocol, IGMP Snooping V1/V2/V3
- support Web, CLI, Telnet, SSH, SNMP management
- port traffic load balancing, support LACP
- rich ACL function, support L2, L3, L4 field matching
- rich QoS functions, support DSCP, 802.1q priority, ACL policy/queue scheduling
- power down alarm, loop alarm, SNMP trap alarm
- support Console debugging
- support POE (POE+) equipment.

Dimension(mm)



Hardware specification

Specification	IG80
Embedded CPU	MIPS-4KEc up to 500MHz
DRAM	DDR1/DDR2/DDR3
Packet Buffer	4.1Mb
Jumbo Frame	10KB
L2 Table(LUT)	8K
HW MAC Constraint	Yes
Trunk Group	8(up to 8 ports)
VLAN	4K
Flexible QinQ	Yes
VLAN Translation	ACL
Port/protocol/MAC/IP-based VLAN	Yes

STP	STP/RSTP/MSTP
-----	---------------

Software specification

L2 Features		Support
MAC Address Table		8K/16K
Jumbo Frame		10K(10000)
Flow Control	802.3x(Full-duplex)	Yes
	Back-Pressure(Half-duplex)	Yes
Spanning Tree	IEEE 802.1D(STP)	Yes
	IEEE 802.1w(RSTP)	Yes
	IEEE 802.1s(MSTP)	16 instances
	Auto Edge Port	Yes
	BPDU Filtering	Yes
	Self Loop Detection	Yes
Link Aggregation	IEEE 802.3ad LACP	Yes
	Static Trunk	Yes
	Max.Group	8
	Max.Ports/Group	8
	Traffic Load Balancing	Yes
VLAN		
VLAN	Static VLAN	256
	Port-based	Yes
	IEEE 802.1Q Tagged-based	Yes
	Protocol-based	8 groups
Voice VLAN	MAC-based	256
	OUI Mode(Auto/Manual)	16 OUI

Surveillance VLAN	OUI Mode(Auto/Manual)	16 OUI
QinQ(IEEE 802.1ad)	Basic	Yes
GARP VLAN Registration Protocol(GVRP)		Yes
Multicast		
Common	Multicast Groups	256
	Immediate Leave	Yes
	Static/Forbidden Router Port	Yes
	Static/Forbidden Forward Port	Yes
	Filtering	128 profiles
	Throttling	Yes
IGMP Snooping	IGMP V1/v2	Yes
	IGMP v3 Basic(BISS)	Yes
	IGMP v2/v3 Querier	Yes
MLD Snooping	MLD v1/v2	Yes
Multicast VLAN Registration(MVR)		Yes(IPv4)
QoS Features		
Priority Queue		8 queues/port
Queue Scheduling	WRR	Yes
	WFQ	Yes
	Strict Priority	Yes
	Hybrid(WRR+SP or WFQ+SP)	Yes
Class of Service	Port-based	Yes
	802.1p	Yes
	IP TOS Precedence	Yes
	IP DSCP	Yes
Trusted Qos		Yes
Rate Limit	Port-based(Ingress/Egress)	Yes
Access Control List(ACL)		

Access Rules		1024
ACL Type	L2/L3/L4	Yes
	MAC-based	512
	IPv4-based	
	IPv6-based	
Security		
AAA	Authentication	Yes
TACACS+		8
RADIUS		8
Authentication Manager	IEEE 802.1X	Yes
	MAC Auth	Yes
	Web Auth	Yes
	Guest VLAN	Yes
	Port-based	Yes
	Host-based	Yes
Account Manager	Local Authentication	Yes
	Multiple User Account	8
	Multi-Level Security	Yes
	Password Recovery Procedures	Yes
Management Access	Management VLAN	Yes
	Management ACL	256
SSL	SSLv2	Yes
	SSLv3	Yes
	TLSV1	Yes
WebUI	HTTPS	Yes
CLI	SSH v1/v2	Yes
Port Security	Dynamic Lock	256
Storm Control	Broadcast	Yes
	Unknown Multicast	Yes
	Unknown Unicast	Yes
Spanning Tree	BPDU Guard	Yes

Protected Port(Port Isolation)		Yes
Black Hole MAC		Yes
CPU Defence Engine		Yes
DoS Prevention		Yes
IDHCP Snooping (with Option 82)		Yes
Dynamic ARP Inspection		Yes
IP Source Guard		256
IP/MAC/Port Binding(IMPB)		Yes
IPV6		
IPV6 Host	Auto Configuration	Yes
	Static IPv6 Address and Prefix Length	Yes
	Static IPv6 Default Gateway	Yes
	IPV6 Neighbor Discovery(ND)	Yes
	IPV6 Duplicate Address Detection	Yes
	ICMPv6	Yes
IPV6 Application	HTTP/HTTPS	Yes
	TELNET	Yes
	SSH	Yes
	SNMP	Yes
	TFTP	Yes
	Syslog	Yes
	PING	Yes
	DHCPv6	Yes
Management		
CLI	Console	3 sessions
	Telnet(RFC854)	
WebUI	THTTP	Yes
SNMP	v1	Yes

	v2c	Yes
	v3	Yes
File Management	Firmware Upgrade/Backup	Yes
	Dual Images	Yes
	Configuration Download/Backup	Yes
	Multiple Configurations	Yes
Upload/Download	TFTP(RFC783)	Yes
	HTTP	Yes
	UART	Yes
Time Management	Local	Yes
	ISNTP	Yes
Port Management	Friendly Port Name(Port Description)	Yes
	Error Disabled Recovery	Yes
Line Management	Console	Yes
	Telnet(RFC854)	Yes
	SSH v1/v2	Yes
DHCP	Client	Yes
DNS	Client	Yes
Software Reset Button		Yes
EEE(802.3az)		Yes
RMON Management		32 entries/type
Discovery		
IEEE 802.1AB Link Layer Discovery Protocol(LLDP)		Yes
ANSI/TIA-1057 LLDP Media Endpoint Discovery(LLDP-MED)		Yes
Diagnostics		

Mirroring	Port-based(Many to One)	4 sessions
Syslog(RFC3164)	Local RAM	Yes
	Local Flash	Yes
	Remote Server	8
System Diagnostics	CPU Utilization	Yes
	Memory Utilization	Yes
	Port Utilization	Yes
Port Diagnostics	Cable Test	Yes
	Fiber Module Status	Yes
Network Diagnostics	Ping Test	Yes
	Traceroute	Yes
UDLD		Yes
MIB		
RFC1213 MIBII(System&Interface groups)		Yes
RFC2819 RMON I(1,2,3,&9 groups)		Yes
RFC1215 Generic Traps		Yes
RFC1493 Bridge		Yes
RFC2674 Bridge MIB Extensions		Yes
RFC2737 Entity		Yes
RFC3635 Ethernet-Like		Yes
RFC2863 Interface Group		Yes
SNMP-Community-MIB		Yes
SNMPv3-MIB		Yes

Order Information

Product Description
8-port Gigabit managed switch module

Order Code
IG80